



# Top 7 key benefits of weigh station bypassing.

**Fleets are constantly searching for technologies that enhance efficiency, profitability, and safety.**

The challenge is that many solutions available demand significant investments of time, money, or both before showing results. The good news is that when it comes to weigh station bypassing with PrePass, the upfront commitment is small, and the rewards can be quick and substantial.

Here are seven key benefits your fleet may gain by signing up for PrePass weigh station bypassing:



## **Fuel savings**

Save up to half a gallon of fuel per bypass while reducing carbon dioxide emissions.



## **Time savings**

Save up to 7 minutes per successful bypass and spend more time at highway speeds.



## **Money savings**

Save up to \$10.65 in operating costs per successful bypass.

**Sources:** Based on PrePass internal data and ATRI Operational Cost of Trucking, June 2024, NACFE | Weigh & Toll Station Bypass.





## 1 Saves valuable time.

Time is one of the most valuable resources in trucking, and PrePass helps fleets and drivers make the most of it.

More than 25 years ago, PrePass pioneered weigh station bypassing to save time on the road.

According to research from North American Council for Freight Efficiency (NACFE), bypassing a weigh station saves an average of:

**5 mins  
per stop**

While five minutes may not seem like much, when you consider how many weigh stations a single truck encounters in a month, those minutes saved can be instrumental. This is especially important with federal hours-of-service (HOS) rules and the electronic logging device (ELD) mandate, which make every minute more critical than ever. All this helps to enable on-time pickups and deliveries, keeping your fleet running efficiently.

## 2 Saves fuel and money.

Fuel is one of the largest expenses for motor carriers, making cost-cutting strategies a priority.

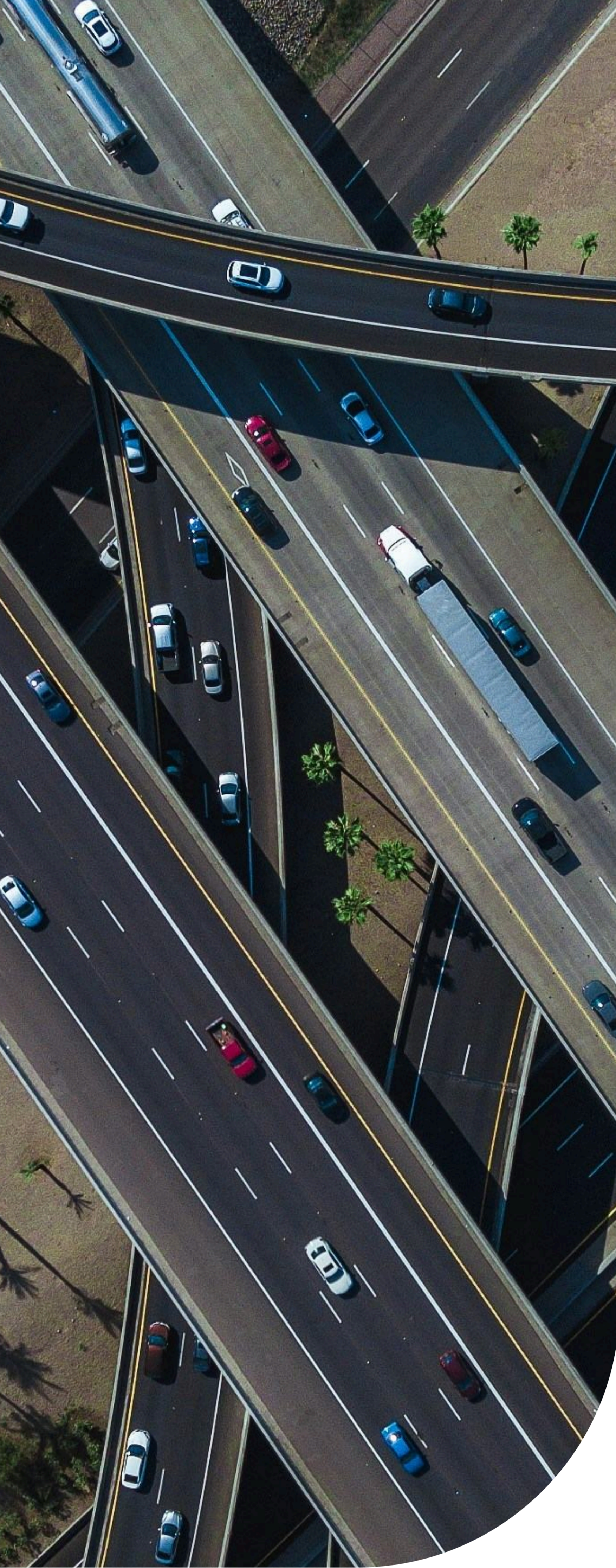
### BYPASSING A WEIGH STATION

Saves an average of **\$11.75** in operating costs per bypass, including up to half a gallon of fuel.

This is because bypassing allows trucks to maintain highway speeds, eliminating the fuel wasted while idling in long lines. In addition, bypassing reduces wear and tear on brakes, tires, and other equipment, resulting in less frequent maintenance and lower repair costs.

**Sources:** ATRI Operational Survey





3

## Expands your bypass opportunities.

With both a transponder and the PrePass mobile app, your fleet can access:

**BYPASS OPPORTUNITIES AT TRANSPONDER-ONLY, MOBILE-ONLY, AND TRANSPONDER + MOBILE LOCATIONS.**

Fully customizable app alerts equip drivers with tools to locate parking, receive alerts for upcoming weigh stations, and stay updated on traffic and critical weather conditions.

For both bypass and toll customers, the PrePass mobile app offers GPS Toll Verification, using GPS-based data to confirm when and where toll charges occur. This feature provides clear, reliable tolling insights to help manage costs effectively.

The app is integrated with select telematics systems, making it a complimentary enhancement to the PrePass weigh station solution—delivering added functionality at no additional cost.

4

## Reduces the risk of a crash.

Every time a truck slows down or stops, the risk of a collision increases.

According to the Washington State Department of Transportation,

**“Fewer commercial vehicles pulling in and out of weigh stations reduces the risk of collisions,” highlighting the safety benefits of transponders.**

Reducing crash risks has two key advantages. First, it minimizes the likelihood of delays caused by accidents. Second, fewer crashes can positively impact your fleet’s insurance costs, potentially leading to lower premiums.

**Sources:** <https://wsdot.wa.gov/travel/commercial-vehicles/transponder-weigh-station-e-screening/transponder-program-benefits>





## 5 Visibility into your safety scores.

You can't manage or improve what you can't see. That's why PrePass offers INFORM™ Safety—a powerful tool that provides fleets with actionable safety data.

With INFORM™ Safety, fleets can monitor their overall safety performance and even drill down to review the results of individual law enforcement inspections.

This comprehensive visibility helps fleets maintain positive safety scores and identify areas for improvement.

## 6 Improves driver retention and recruiting.

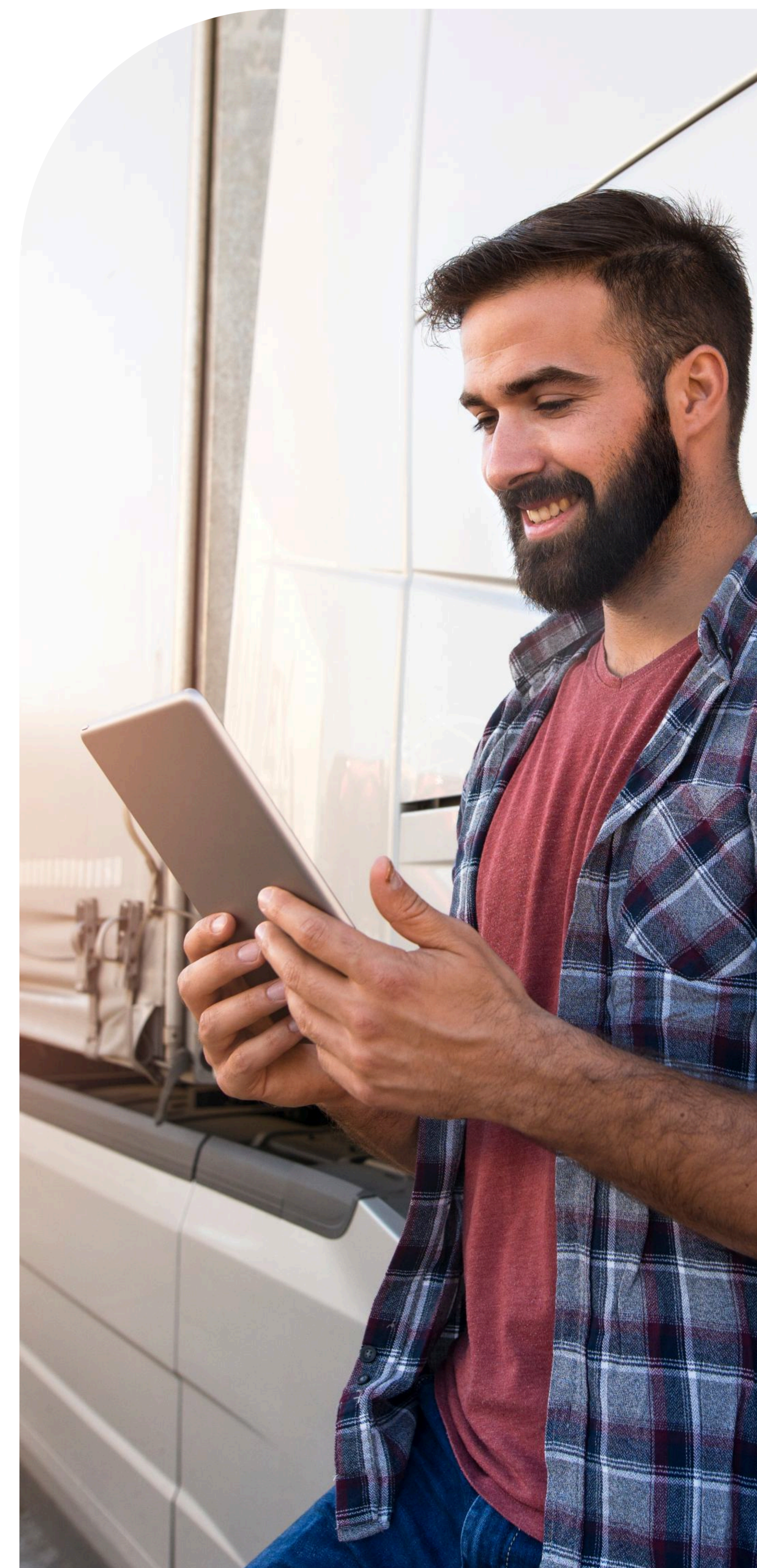
There's a well-known saying in trucking:

**“If the wheels aren't turning, you're not earning.”**

For drivers paid by the mile, waiting at weigh stations can be a frustrating and unproductive use of time. Weigh station bypassing helps drivers stay on the move, maximizing their earning potential.

Customers have shared with PrePass that by helping to avoid delays, drivers reduce stress, improve their job satisfaction, and are more likely to remain loyal to their company over the long term.

A bypass solution like PrePass doesn't just improve retention—it can help to enhance recruitment. Drivers are increasingly drawn to companies that embrace technology to streamline operations and enhance their daily experience, making your fleet more attractive to top talent.





## 7 Makes your fleet more attractive to customers.

### PREPASS STANDS OUT AS

the only weigh station bypass provider recognized as a U.S. Environmental Protection Agency (EPA) SmartWay Affiliate, promoting environmentally responsible logistics practices.



Reducing your fleet's carbon footprint not only benefits the planet but also makes your company more appealing to customers.

In fact, independent research from the University of Arkansas' Department of Supply Chain Management shows that motor carriers adopting bypass technology are more likely to be chosen by customers due to their eco-friendly practices.

**Sources:** SmartWay Affiliates List | US EPA, Experimental Test of Green Management Information System Effects on Carrier Selection: Weigh Station and Tollbooth Bypass Technology Adoption by Rodney W. Thomas, University of Arkansas, page 7.



**Contact PrePass today to start saving time and money every day.**

[www.prepass.com](http://www.prepass.com)

Weigh station bypassing delivers countless benefits, but choosing the right partner is key.

PrePass is the only provider offering fully integrated bypass and tolling management solutions. With a comprehensive coast-to-coast network of weigh station bypass locations, PrePass gives you the most flexible and effective options tailored to your trucking operation.